

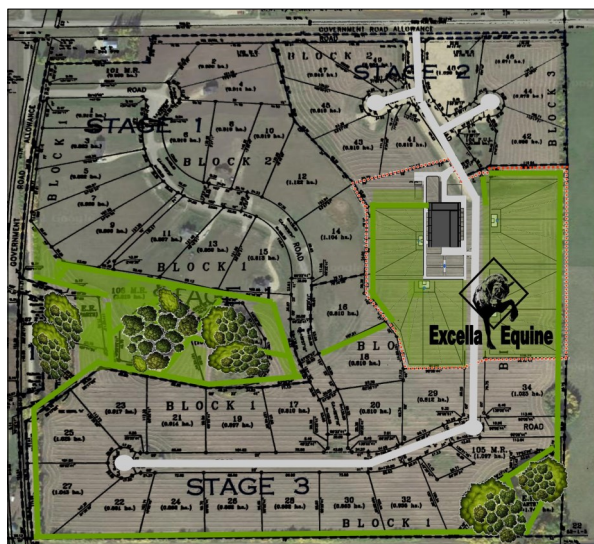


EXCELLA EQUINE PARK

You can live here...

Your dream horse lifestyle awaits...

Excella Equine Park is a proposed ranchette development, just outside Stony Plain town limits. Tucked into the rolling countryside hills with stunning views, only a 40 minute drive to Edmonton. Enjoy acreage living with your horses, access to winding natural trails and first class equestrian facilities.



HORSE ACREAGE LIVING:

- Five minutes from town
- 40 minutes west of Edmonton
- 100 acres of rolling hills
- First Class Equestrian Facilities
- Indoor / Outdoor Arenas
- Horse Board Available
- Professional Training & Lessons
- Guest Viewing Lounge
- Access to Horse Trails
- Feed & Tack Store

RANCHETTE FEATURES:

- Gated Horse Community
- 2+ Acre Lots for sale
- Custom Built Homes
- Incredible views
- Room to keep horses
- Build fences & shelter
- Ride from your property
- Access Horse Facilities
- On Call Vet / Farrier Services

